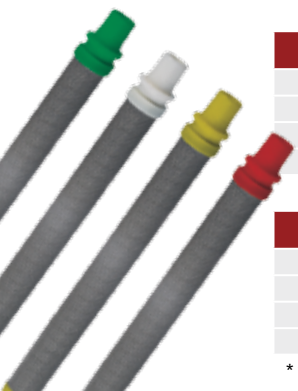


# TR<sup>2</sup> - Summary of tip varieties

High diversity for an optimal adjustment

Tip Size Trim spray	Tip Size Wide spray	Recommended filter	Color of tip	Part Number
<b>Regular TR<sup>2</sup> tips (692-xxx)</b>				
107	311	red - extra fine	red	692-311
109	313	red - extra fine	red	692-313
111	415	yellow - fine	red	692-415
211	515	yellow - fine	red	692-515
113	417	white - medium	red	692-417
213	517	white - medium	red	692-517
213	519	white - medium	red	692-519
215	521	white - medium	red	692-521
223	535	green - coarse	red	692-535
321	627	green - coarse	red	692-627
327	635	green - coarse	red	692-635
321	831	green - coarse	red	692-831
<b>Wide Spray TR<sup>2</sup> tips (692-xxxx)</b>				
315	1223	white - medium	red	692-1223
317	1231	white - medium	red	692-1231
<b>Fine Finish TR<sup>2</sup> tips (693-xxx)</b>				
208	510	red - extra fine	purple	693-510
210	512	red - extra fine	purple	693-512
212	514	red - extra fine	purple	693-514
<b>Line Striping TR<sup>2</sup> tips (694-xxxxxxx)</b>				
517	1708	white - medium	yellow	694-1708517
519	1908	white - medium	yellow	694-1908519
621	2108	white - medium	yellow	694-2108621
623	2308	white - medium	yellow	694-2308623



Threaded Filters	Part Number
Coarse (green)*	500-200-03
Medium (white)	500-200-06
Fine (yellow)	500-200-10
Extra Fine (red)	500-200-15
* for use with LX-80 and LX-80 Platinum guns	
Unthreaded Filters	Part Number
Coarse (green)*	0089957
Medium (white)	0089958
Fine (yellow)	0089959
Extra Fine (red)	0089960

\* for use with G-10, LX-30, LX-40, LX-50, LX 70, S-3 and S-7 guns

# TITAN™

Advanced Performance. Total Reliability.

## Our mission:

As the leader in airless spray technology, Titan offers world-class, end-to-end solutions for the industry. Our wide range of sprayers all feature intelligent tools specifically designed to exceed your needs. Performance versatility is the hallmark of our products – from indoor to outdoor rigs, gas to electric, paint to all kinds of coatings and finishes.

We develop our sprayers in direct response to industry demand and build them to be high performing and long lasting with very little downtime. When repairs are necessary, they are easier, quicker and less expensive.



Printed in USA • Subject to modifications • JB80100A • SJ40164 • 06/2011 MS

Sold exclusively through professional distributors

Visit us at: [www.titantool.com/international](http://www.titantool.com/international)

All information contained in this brochure is based on the latest information available at time of printing. Titan reserves the right to make changes at any time, without notice.

Distributed by

**TITAN™**

Advanced Performance. Total Reliability.



## TR<sup>2</sup> TIP

*Work two  
times faster,  
more efficient,  
more flexible*



## TR<sup>2</sup> - Our 2 in 1 solution

### Always the right tip size

The new TR<sup>2</sup> reversible tip from Titan does away with the need for time consuming changes from small to large tip. Just turn the tip and always have the right tip size at hand! One tip side is ideal for small amounts of material and small angles, e.g. for jobs requiring clean edges. The other tip side is suitable for large areas and a high working speed. Our TR<sup>2</sup> tip comes in different sizes for use with lacquers or emulsions and for use with Titan line marking machines.

## TR<sup>2</sup> - Your benefits

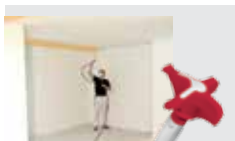
### Speed - flexibility - control

- » Optimal adjustment to the particular object and spraying material with one tip.
- » The TR<sup>2</sup> tip can be easily assembled.
- » Switch quickly between two tip sizes - work flexible and fast.
- » Speed for highest rate of application. Control for precise painting.

## TR<sup>2</sup> - Application category

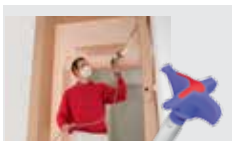
### All materials - all sizes - all jobs

With three tip types you have the optimal tip for your material and surface. The colour of the tip indicates the suitable spraying material.



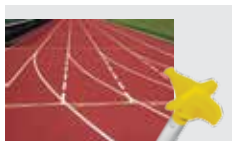
#### Standard paints

Ideal for all emulsion paints. Available in various tip combinations



#### Lacquers

Ideal for lacquers, stains and clear coats. Smaller than standard tips, especially for high-quality surfaces.



#### Marking paints

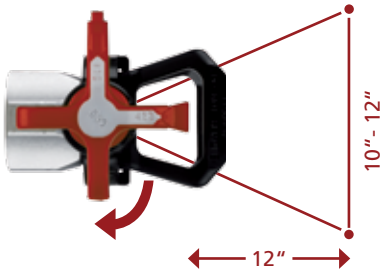
Designed with a straight, giving you the best edge in the industry.

# TITAN™

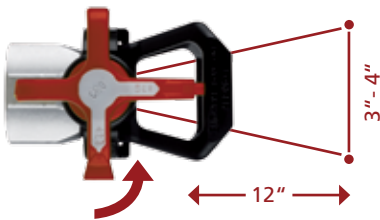
Advanced Performance. Total Reliability.

## TR<sup>2</sup> - How it works

Turn the tip to change between the two tip sizes



**Wide Spray** - wide angle / large orifice opening. Ideal for large areas and a high working speed.



**Trim Spray** - narrow angle / small orifice opening. Ideal for small amounts of material and small angles, e.g. for trimming jobs.



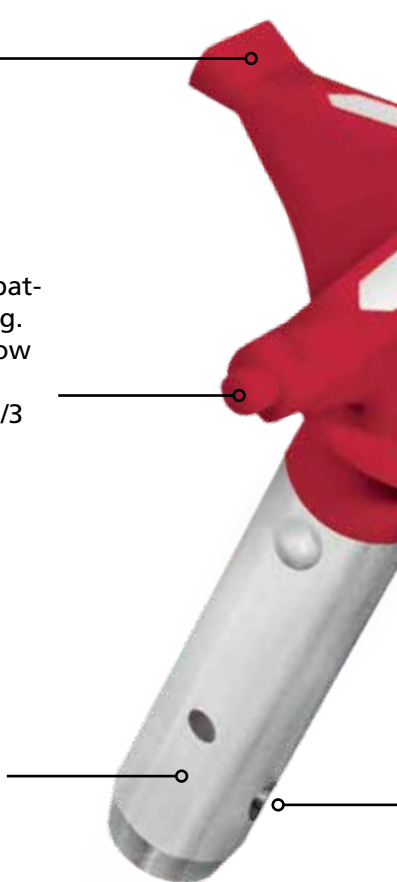
## TR<sup>2</sup> - The tip in detail

Highest quality - smart color coding

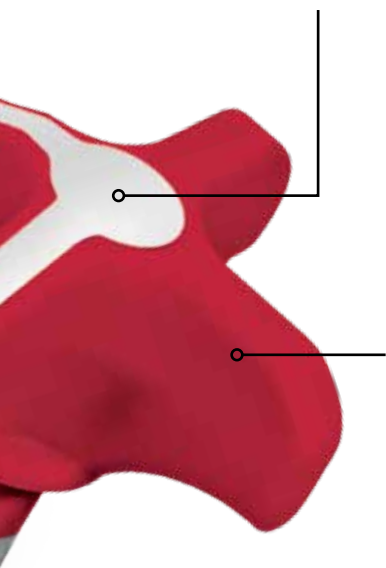
**Wide Spray** with wide fan pattern and large orifice opening.  
Your benefits: best surface coverage, highest speed and greatest time saving.

**Trim Spray** with narrow fan pattern and small orifice opening.  
Your benefits: best control, low overspray and precise paint application. Approximately 1/3 width of the wide tip.

Highest quality tungsten carbide assures **longest life**, durability and fewer passes for a better coverage. It is precision machined for a perfect fan pattern. The solvent-proofed seal holds up against the harshest coatings.



The color coding on the nozzle **indicates the recommended gun filter**. With the right matching between gun filter, tip and spraying material you achieve perfect results.

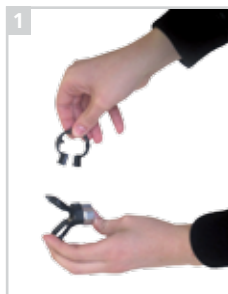


The **ergonomic design** of the tip assures comfort when rotating. As Titan standard reversible tips, the TR<sup>2</sup> tip allows quick and easy cleaning: Simply turn the tip and rinse. You don't need any tool.

The two tip cores are arranged one above the other for **quick changes** between the two tip sizes. This saves time and you work even faster and more efficient.

## TR<sup>2</sup> - Assembly

Three steps - quick and easy



1 Place the TR<sup>2</sup> tip holder onto the tip guard and close it.



2 Fix the TR<sup>2</sup> tip holder by putting on the ring.



3 Insert the TR<sup>2</sup> tip into the tip holder. You are ready to spray.

## TR<sup>2</sup> - Accessories

The right accessories for every project



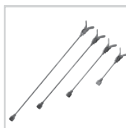
**LX 80" Airless gun**  
This tried and tested airless gun. Ideal for any job. Includes a tip and a tip holder.



**Tip Clean**  
Your new TR<sup>2</sup> tips are automatically, properly and effectively cleaned - without touching them.



**Airless whip hose**  
Improve flexibility and reduce fatigue with the proper length whip hose.



**Tip extension**  
With a tip extension you can extend your reach. This eliminates the need for ladders and scaffolding.



**Gun filters**

- Filter 180 mesh extra fine
- Filter 100 mesh fine
- Filter 50 mesh medium
- Filter 30 mesh coarse



**Part Renu**  
Non-flammable water based cleaner safely removes paint from spray guns and sprayer accessories. Part Renu is environmentally safe, odor free - will not burn skin and easily washes off with water.

For every tip there is the right filter. Only with the right filter will you avoid tip blockages and achieve optimal results.

environmentally safe, odor free - will not burn skin and easily washes off with water.